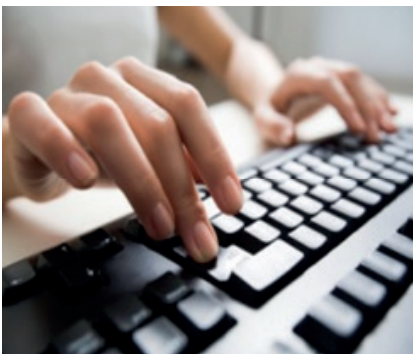


Finding Out About Support Near You



You can find out what support there is near you by looking at the **Local Offer**. This is the name of a or written information, like a leaflet. It is written by your **local authority**, which might be called ‘**the council**’



The Local Offer is for:

- **Disabled** children and young people
- **Children and young people with special educational needs.** Special educational needs are when you need extra help to learn things.
- **Families** of those children and young people



Special Educational Needs & Disability (SEND)

Information, Advice
and Support Service

for children, young people and parents



The Local Offer must give you **information** about the support that you should be able to get in your area.



The Local Offer must have information about:

- **Schools, colleges** or training
- Special **health** support
- Hobbies or fun **activities**
- Support for becoming an **adult**
- **Transport**



The local authority must ask you what it should put in the **Local Offer**. You can tell your local authority what you think about it. They must show everyone what people have said and explain how they are going to make it better.



Special Educational Needs & Disability (SEND)

Information, Advice
and Support Service

for children, young people and parents



Your Local Offer is on your **local authority website**. If you cannot get on the website then they should give you **written information**, like a leaflet.

To find your Local Offer, go to:
**[www.rbwm.afcinfo.org.uk/
local_offer](http://www.rbwm.afcinfo.org.uk/local_offer)**



To find out more about the Local Offer, go to:
**[www.youtube.com/user/
WatchCDC](http://www.youtube.com/user/WatchCDC)**



Information, Advice and Support Services can help you to find your Local Offer. They can also **help** you to tell your local authority what you think about your Local Offer.

Ask one of our members of staff for support.